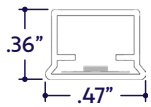


### GENERAL FEATURES

<b>Applications</b>	Accent, Decorative, Surface, Recess, Pendant Lighting
<b>Lens</b>	Clear, 50% Semi-Frosted, or 100% Frosted
<b>Viewing Angle</b>	180°
<b>Length</b>	Built to Order (+/- 1/8" Tolerance)
<b>Construction</b>	Polycarbonate Extrusion
<b>Field Cutting</b>	Dry Location Field Cuttable
<b>Weight</b>	0.049 lbs per foot
<b>Mounting</b>	Mounting Channel or Mounting Clips (Sold Separately)
<b>Listing</b>	Dry, Wet, or IP67 Location UL2108, 67.1.9, 60.4, CSA C22.2 #9 UL8750, CSA250
<b>Driver</b>	Remote (Sold Separately)
<b>Closet Rating</b>	Up to 3.6 Watts per Foot Maximum
<b>Temperature Ratings</b>	Operating / Startup: -20° to 48°C (-4° to 120°F) Storage: -40° to 76°C (-40° to 170°F)
<b>Installation Link</b>	

### END VIEW / DIMENSIONS



### ELECTRICAL

<b>Dimming</b>	DMX, DALI
<b>Maximum Run (Class 1 Applications)</b>	26' (4.5W) 33' (3.6W)
<b>Maximum Run (Class 2 Applications)</b>	18' (4.5W) 23' (3.6W)
<b>Luminaire Voltage</b>	24VDC

### SPECIFY PRODUCT CODE | CHOOSE FROM DROP DOWNS

Series	Lens	Watts per Foot	Dimming	LED	Listing	Luminaire Length
				<b>DWH</b>		
ZUDA Standard Tube (A8-ZUDA-STB)	Clear Lens (CL)	3.6 Watts (3.6W)	DMX-512* <sup>1</sup> (DMX)	2400K - 6400K (DWH)	Indoor (DRY)	Specify Length in Feet & Inches <b>Example: 7'8"</b>
	50% Semi-Frosted Lens (SF)	4.5 Watts (4.5W)	DALI* <sup>2</sup> (DALI)		Outdoor* <sup>3</sup> (WET)	
	100% Frosted Lens (F)				Outdoor IP67* <sup>3</sup> (IP67)	

\*<sup>1</sup> Default DMX address of each luminaire is 001. Consult third party DMX commissioner to modify at time of installation.  
 \*<sup>2</sup> DALI commissioning to be performed by a third party at time of installation. ALUZ does not provide DALI commissioning.  
 \*<sup>3</sup> Run lengths are required for Wet & IP67 Location products. Provide run lengths at time of order.

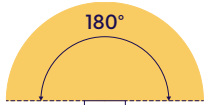


### LAMP FEATURES

<b>Lamp Type</b>	Dynamic White LEDs: 2400K - 6400K
<b>CRI</b>	> 90
<b>Efficacy*</b>	117 Lumens per Watt @ Lowest CCT ( <b>24K</b> ) 129 Lumens per Watt @ Highest CCT ( <b>64K</b> )

**Note:** Efficacy is based on 24K CCT LED (**24K**) with Clear Lens (**CL**).

### BEAM ANGLE



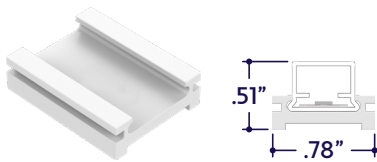
180° x 180° Beam

### DRIVERS

Dimming Selection	Product Code	Link to Specification Sheet / URL
DMX-512	(DMX)	
DALI	(DALI)	

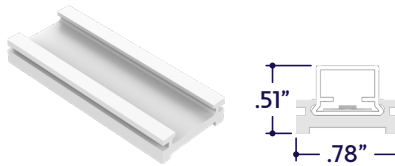
### MOUNTING OPTIONS (Sold Separately)

**Note:** Mounting clips are only available in Natural Silver Finish, unless otherwise specified.



Part #	Qty.
A8-ZUDA-STB-MC	

**Note:** Use 1 mounting clip per 2', rounded up. Click on image to see cut sheet for additional details.



Part #	Qty.
A8-ZUDA-STB-UC-8'	

**Note:** Order Mounting Channel as needed in 8', field cuttable lengths. Click on image to see cut sheet for additional details.

### END CAPS (Sold Separately)



End Cap  
(A8-ZUDA-STB-EC)

Part #	Qty.
A8-ZUDA-STB-EC	



End Cap with Exit Hole  
(A8-ZUDA-STB-EC-H)

Part #	Qty.
A8-ZUDA-STB-EC-H	

### LAMP SPECIFICATIONS

Lamp Number	Correlated Color Temperature (CCT) Gamut	L70 LED Life
DWH	Dynamic White: 2400K - 6400K	50,000 hrs.

### LENS / OPTICS APPEARANCE



Clear Lens (**CL**)  
Visible Diode Image  
0% Light Loss



50% Semi-Frosted Lens (**SF**)  
Slight Diode Image  
12.5% Light Loss



100% Frosted Lens (**F**)  
Slight Diode Image  
25% Light Loss

### DMX ACCESSORIES (Sold Separately)



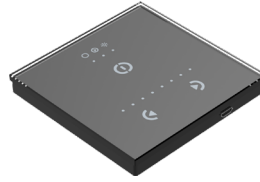
Part #	Qty.
<a href="#">DRV100-E-UNV-24VDC-DMX-DRY-DWH</a>	
<a href="#">DRV100-E-UNV-24VDC-DALI-DRY-DWH</a>	

**Note:** Use 1 Driver for each run up to 100 Watts.  
Click on image to see Specification Submittal.



Part #	Qty.
<a href="#">CTRL-DMX-RGBX</a>	

**Note:** Use 1 Decoder for each run up to 180 Watts. Not required if using DRV100-E.



Part #	Qty.
<a href="#">CTRL-DMX-128C</a>	

**Note:** Controls up to 128 DMX Channels, or up to 32 RGBW light fixtures.



Part #	Qty.
<a href="#">CTRL-DMX-1024C</a>	

**Note:** Controls up to 1024 DMX Channels, or up to 256 RGBW light fixtures.

### DRY CONNECTORS (Sold Separately)

**Note:** Connectors are factory assembled to each run length. Connectors are subject to change without notice.



Dry Power Connector  
(20/3 Gauge Wire)  
**(A8-ZUDA-STB-PC-DRY-X)**  
X = Specify Length, 36" Default, 25' Maximum

Part #	Length	Qty.
A8-ZUDA-STB-PC-DRY-	36"	
A8-ZUDA-STB-PC-DRY-		

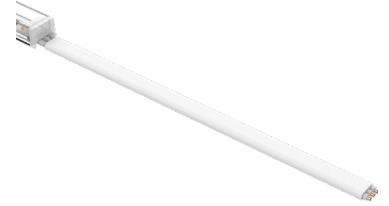
**Note:** Specify 1 Power Connector for each lead required. Power Connectors are factory assembled to each length.



Dry Power Connector with Black Jacket  
(20/3 Gauge Wire)  
**(A8-ZUDA-STB-PC-DRY-BK-X)**  
X = Specify Length, 36" Default, 25' Maximum

Part #	Length	Qty.
A8-ZUDA-STB-PC-DRY-BK-	36"	
A8-ZUDA-STB-PC-DRY-BK-		

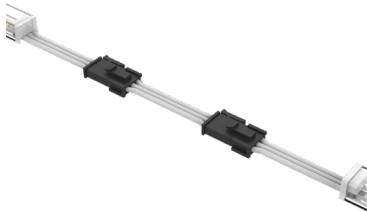
**Note:** Specify 1 Power Connector for each lead required. Power Connectors are factory assembled to each length.



Dry Power Connector with White Jacket  
(20/3 Gauge Wire)  
**(A8-ZUDA-STB-PC-DRY-WH-X)**  
X = Specify Length, 36" Default, 25' Maximum

Part #	Length	Qty.
A8-ZUDA-STB-PC-DRY-WH-	36"	
A8-ZUDA-STB-PC-DRY-WH-		

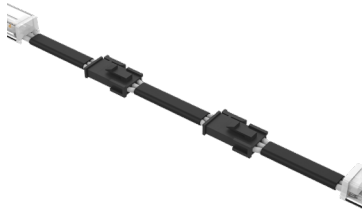
**Note:** Specify 1 Power Connector for each lead required. Power Connectors are factory assembled to each length.



Dry Continuous Connector  
(20/3 Gauge Wire)  
**(A8-ZUDA-STB-CC-DRY-X)**  
X = Specify Length, 3" Default

Part #	Length	Qty.
A8-ZUDA-STB-CC-DRY-	3"	
A8-ZUDA-STB-CC-DRY-		

**Note:** Specify Continuous Connectors to traverse a gap or obstacle. Continuous Connectors are factory assembled to specified lengths.



Dry Continuous Connector with Black Jacket  
(20/3 Gauge Wire)  
**(A8-ZUDA-STB-CC-DRY-BK-X)**  
X = Specify Length, 3" Default

Part #	Length	Qty.
A8-ZUDA-STB-CC-DRY-BK-	3"	
A8-ZUDA-STB-CC-DRY-BK-		

**Note:** Specify Continuous Connectors to traverse a gap or obstacle. Continuous Connectors are factory assembled to specified lengths.



Dry Continuous Connector with White Jacket  
(20/3 Gauge Wire)  
**(A8-ZUDA-STB-CC-DRY-WH-X)**  
X = Specify Length, 3" Default

Part #	Length	Qty.
A8-ZUDA-STB-CC-DRY-WH-	3"	
A8-ZUDA-STB-CC-DRY-WH-		

**Note:** Specify Continuous Connectors to traverse a gap or obstacle. Continuous Connectors are factory assembled to specified lengths.

### WET CONNECTORS (Sold Separately)

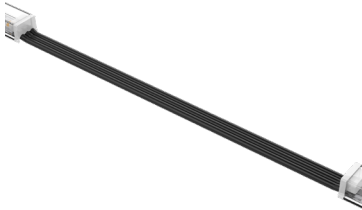
**Note:** Connectors are factory assembled to each run length. Connectors are subject to change without notice.



Wet Power Connector  
(20/3 Gauge Wire)  
**(A8-ZUDA-STB-PC-WET-X)**  
X = Specify Length, 36" Default, 25' Maximum

Part #	Length	Qty.
A8-ZUDA-STB-PC-WET-	36"	
A8-ZUDA-STB-PC-WET-		

**Note:** Specify 1 Power Connector for each lead required. Power Connectors are factory assembled to each length.



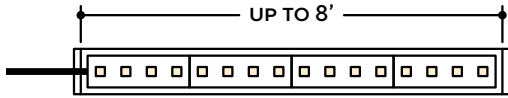
Wet Continuous Connector  
(20/3 Gauge Wire)  
**(A8-ZUDA-STB-CC-WET-X)**  
X = Specify Length, 3" Default

Part #	Length	Qty.
A8-ZUDA-STB-CC-WET-	3"	
A8-ZUDA-STB-CC-WET-		

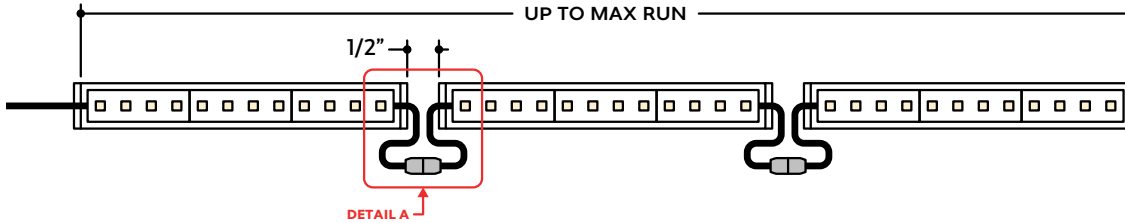
**Note:** Specify Continuous Connectors to traverse a gap or obstacle. Continuous Connectors are factory assembled to specified lengths.

### DESIGN GUIDELINES

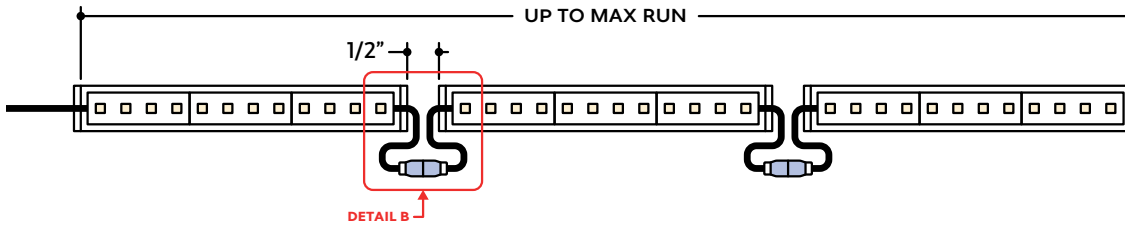
#### Individual Fixture



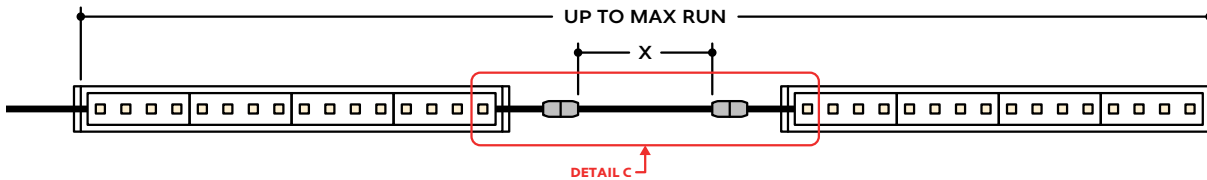
#### Continuous Run (Dry Location)



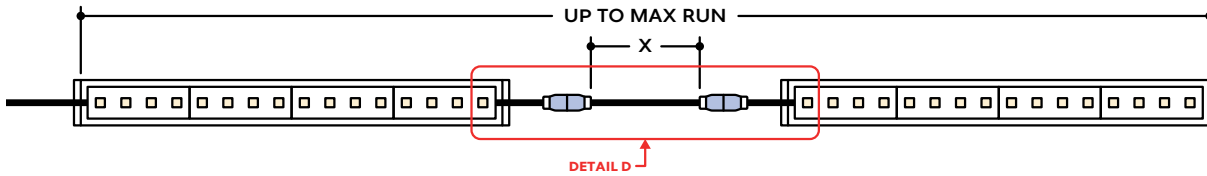
#### Continuous Run (Wet Location)



#### Runs with Continuous Connector (Dry Location)



#### Runs with Continuous Connector (Wet Location)

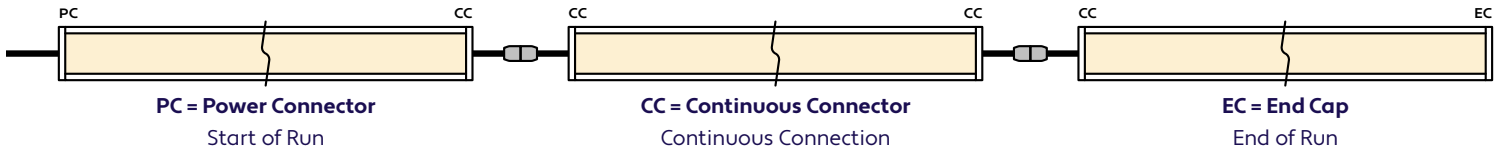


### KEY

- Detail A** **Continuous Connection (Dry Location):** Fixture segments are connected using a quick disconnect, with a 1/2" gap between segments.
- Detail B** **Continuous Connection (Wet Location):** Fixture segments are connected using a wet splice connector, with a 1/2" gap between segments.
- Detail C** **Dry Continuous Connector:** Used to span a corner or traverse a gap, corner, or obstacle in a dry location installation area.
- Detail D** **Wet Continuous Connector:** Used to span a corner or traverse a gap, corner, or obstacle in a wet location installation area.

**Note:** Drawings not to scale. Product may differ from examples shown.

### CONNECTION SEQUENCE

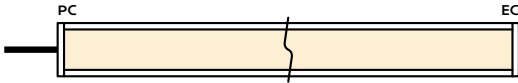


- Specifying a layout is not required to place an order.
- Configuration code applies to full length ordered and will be built per the Continuous Run models on Design Guidelines.
- Connector type subject to change based on availability and listing. Refer to Design Guidelines for details.

### HOW TO SPECIFY CONFIGURATIONS

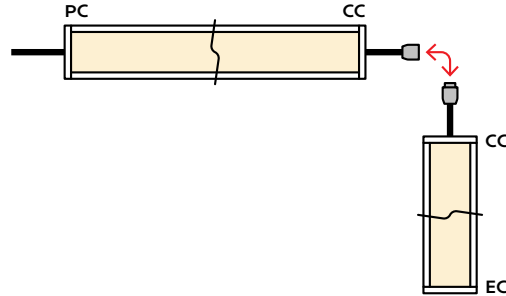
#### Example: 20' Straight Run

- 1x A8-ZUDA-STB-CL-3.6W-DMX-DWH-DRY-20'-PC-EC



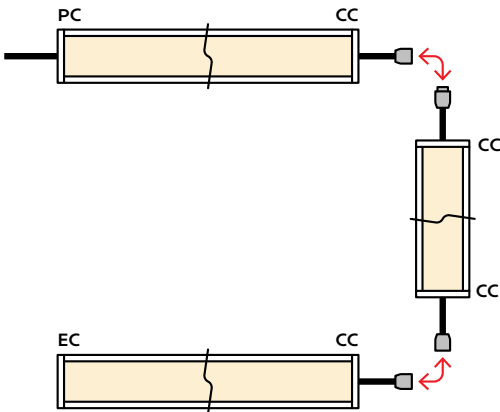
#### Example: 25' L-Shaped Run

- 1x A8-ZUDA-STB-CL-3.6W-DMX-DWH-WET-12'-PC-CC
- 1x A8-ZUDA-STB-CL-3.6W-DMX-DWH-WET-6'-CC-EC



#### Example: 30' U-Shaped Run

- 1x A8-ZUDA-STB-CL-3.6W-DMX-DWH-DRY-6'-PC-CC
- 1x A8-ZUDA-STB-CL-3.6W-DMX-DWH-DRY-18'-CC-CC
- 1x A8-ZUDA-STB-CL-3.6W-DMX-DWH-DRY-6'-CC-EC



#### Example: 28' Rectangle Shaped Run

- 1x A8-ZUDA-STB-CL-3.6W-DMX-DWH-WET-11'-PC-CC
- 1x A8-ZUDA-STB-CL-3.6W-DMX-DWH-WET-3'-CC-CC
- 1x A8-ZUDA-STB-CL-3.6W-DMX-DWH-WET-11'-CC-CC
- 1x A8-ZUDA-STB-CL-3.6W-DMX-DWH-WET-3'-CC-EC

